


Installation manual BERNINA embroidery software 6 SP1

Installation Requirements

- An operating BERNINA embroidery software 6 installed on your Computer.
- All programs are closed.
- Administrator rights for your computer.

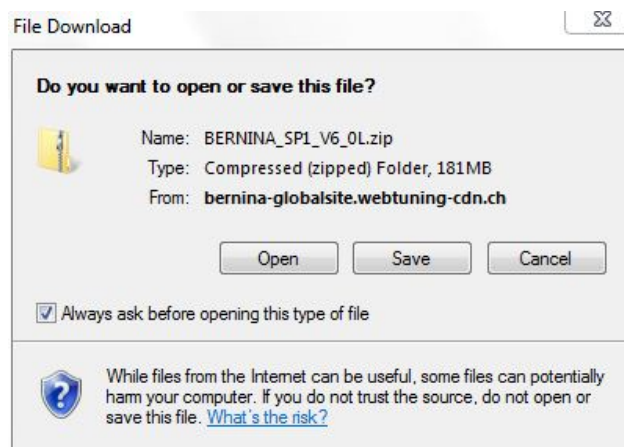
Before you start with the installation of the Service Pack, please be sure that the Dongle is not in a USB-Port.

Step 1: Download Service Pack

To start the download process, click on the link:  [BERNINA embroidery software 6 SP1](#)

Step 2:

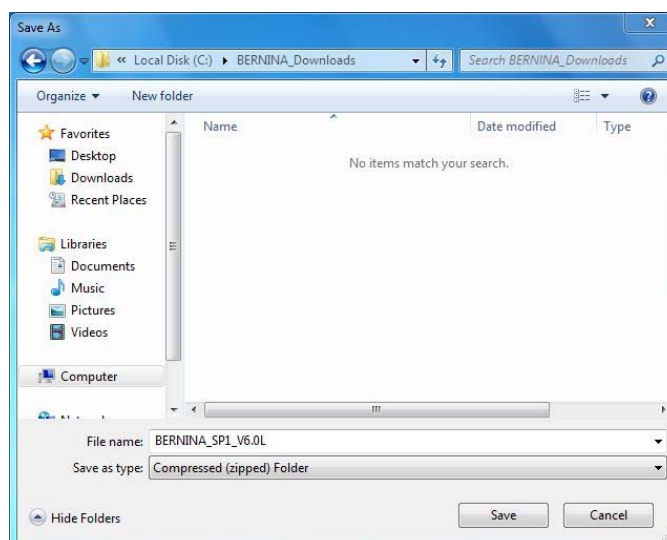
A dialog window will open:
Click on "**Save**".

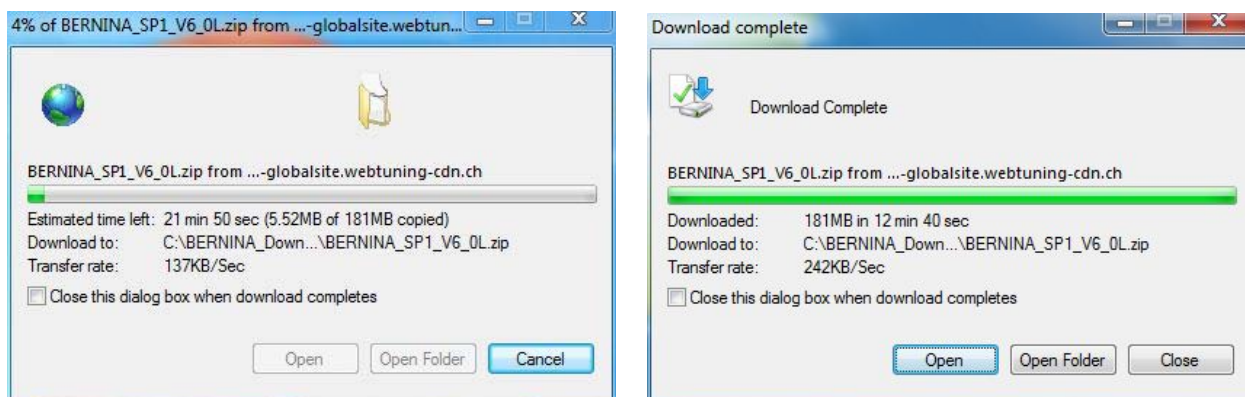


Step 3:

A "**Save as**" window will open. Select a path on your local PC (**Example: C:/BERNINA_Downloads**).

Click on "**Save**" to download the ZIP file onto your computer.





(The time for downloading the file is dependent on the band width of your Internet connection.)
Unselect "Close this dialog box when download completes" and click on "Open".

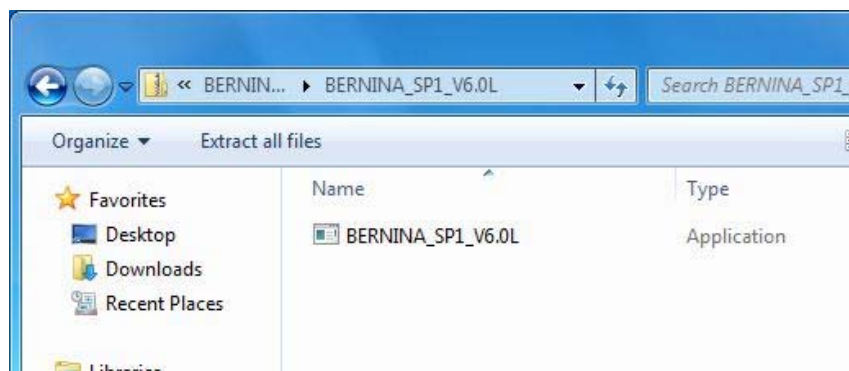
Step 4:

When the security message is displayed, click on "Allow".



Step 5: Installation of the Service Pack

To start the installation, click on the file: BERNINA_SP1_V6.0L.exe. The installation of the Service Pack1 will start.



Step 6:

Depending on the setting and version of your Windows® operating system, a security message is displayed. To continue with the installation, click on the "Continue", "Execute" or "Yes" button.

Step 7:

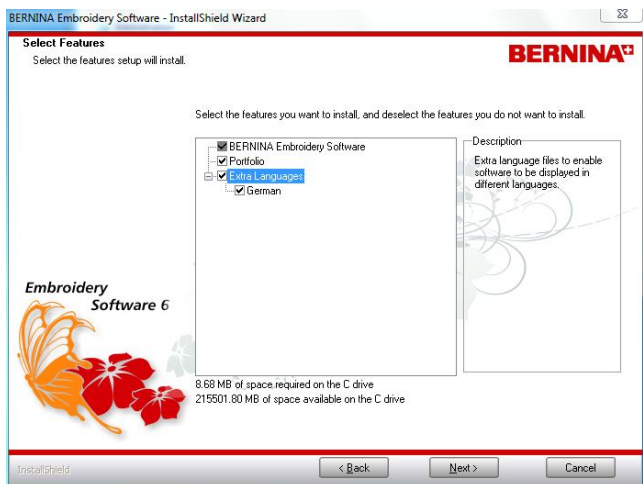
Select **"Next >"** to carry on with the installation. Follow the instructions on your screen.



Step 8:

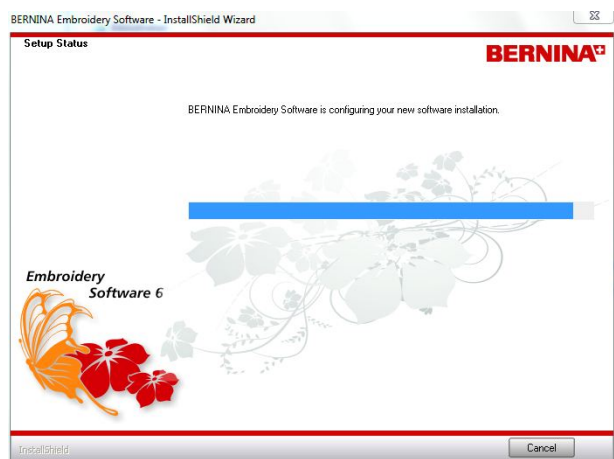
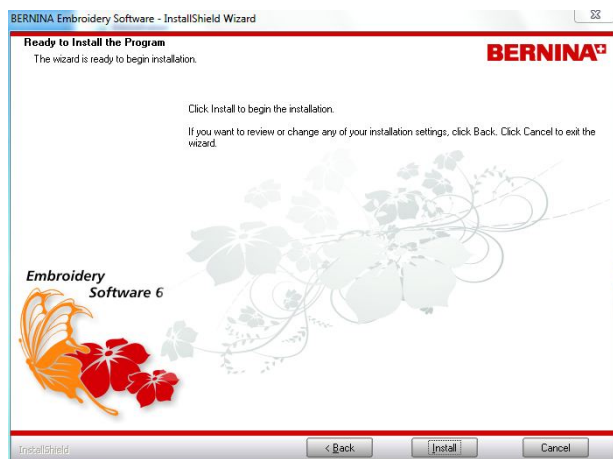
Select **„Extra Languages“** to install **„German“** as the application language.

Select **"Next >"** to carry on with the installation. Follow the instructions on your screen.



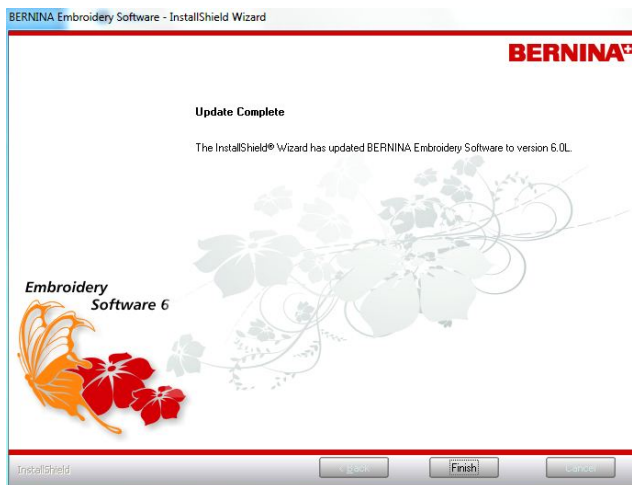
Step 9:

Select **"Install >"** to carry on with the installation. Follow the instructions on your screen.



Step 10: Installation finish

Click on "**Finish**" to complete the installation of Service Pack 1.



Plug in your Dongle on an USB-Port and start your BERNINA embroidery software 6.

Step 11: Checking the version

After you have started the BERNINA embroidery software 6 you can check in „**Help – About ...**“ the installed embroidery software version. (V6.0L)

