

This document describes the use of the BERNINA V6 Dongle Checker, designed to test dongles for BERNINA Embroidery Software V6. (Pre-V6 dongles need to be checked by an earlier BERNINA V6 Dongle Checker.) The program is provided to distributors and dealers authorized to sell BERNINA Embroidery Software. It is not intended for use by end users.

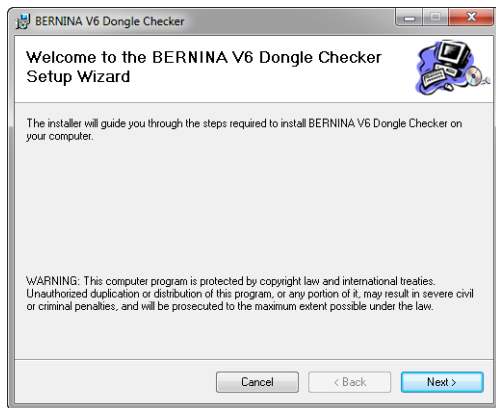
## Installing the BERNINA V6 Dongle Checker

The BERNINA V6 Dongle Checker can be downloaded or installed from CD. If downloaded, copy the **BERNINA V6 Dongle Checker.msi** to a temporary location – e.g. a Temp folder on your C: drive, or your PC desktop.

### To install the BERNINA V6 Dongle Checker

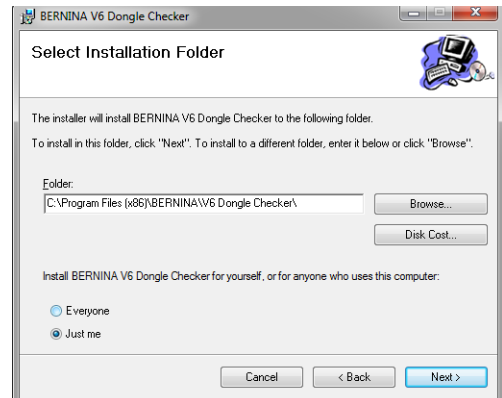
- 1 Navigate to the place where the **BERNINA V6 Dongle Checker.msi** file is stored – e.g. CD-ROM or PC desktop.
- 2 Double-click the **BERNINA V6 Dongle Checker.msi** file.

A welcome screen appears.



- 3 Click **Next**.

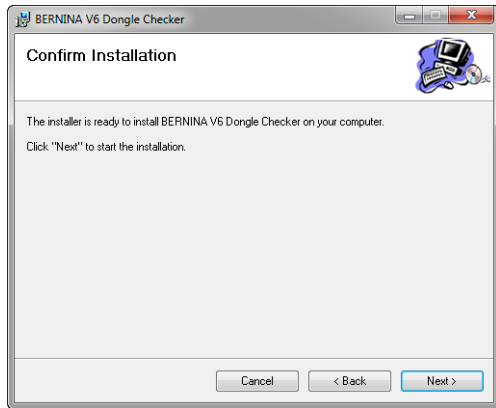
- 4 Again click **Next**. The **Select Installation Folder** screen appears.



**Tip** Use the **Disk Cost** button to view the disk space available on different installed drives.

- 5 Change the installation location as required and/or set user permissions – i.e. yourself only or anyone logging onto the PC – and click **Next**.

A **Confirm Installation** screen appears.



6 Click **Next** to proceed.

An **Installation Complete** screen will appear when all files have been successfully installed. A BERNINA V6 Dongle Checker icon is also installed to your desktop as well as the **Start** menu.

7 Click **Close** to exit and, if you have downloaded the **BERNINA V6 Dongle Checker.msi** file to a temporary location on your PC, delete it.

The BERNINA V6 Dongle Checker is now ready for use.

## Running the BERNINA V6 Dongle Checker



Double-click to start the BERNINA V6 Dongle Checker.

The BERNINA V6 Dongle Checker can be run from the desktop or the **Start** menu.

## To run the BERNINA V6 Dongle Checker

1 Attach the BERNINA Embroidery Software V6 dongle to be checked.

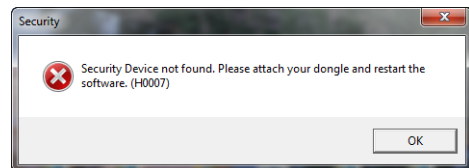


**Note** Only the dongle being tested should be attached.

2 Double-click the desktop icon to start the BERNINA V6 Dongle Checker.

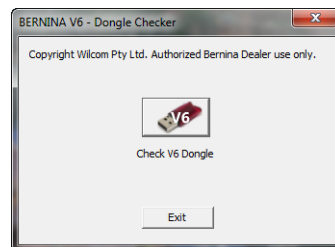
Alternatively, select **Start > Programs > BERNINA Embroidery Software > BERNINA V6 Dongle Checker**.

◀ If the program cannot detect a valid dongle, an error message will appear.



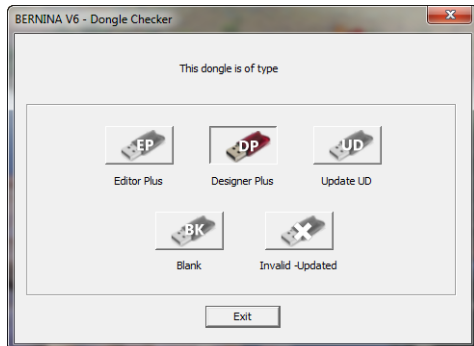
Possible reasons: dongle of wrong type, broken or corrupted, not attached properly.

◀ If the program finds a valid V6 dongle, the **BERNINA V6 Dongle Checker** dialog is displayed.








3 Click to select the BERNINA Embroidery Software V6 dongle to be checked.

If one is detected, this dialog is displayed:



The detected dongle type is selected. The table below explains the coding:

Code	Dongle type
	Editor Plus dongle
	Designer Plus dongle
	Update dongle – i.e. ready for update from a lower version of the software.
	Blank dongle
	Invalid - Updated dongle – i.e. dongle is not broken but has been updated to a higher version of the software.

- 4 Click **Exit** to close the program.